



ALABAMA DEPARTMENT OF

MENTAL HEALTH

HCBS Modification Decision-Making Tree for ID Waiver

Alabama Department of Mental Health

Division of Developmental Disabilities

April 2021

HCBS Modifications Include Any of the Following *in a Residential Habilitation Setting*:

- Restriction on access to food at any time
- Restriction on having visitors at any time
- Restriction on freedom to control and choose daily schedule and activities
- Restrictions on having key or other way to independently open locked doors in residential setting at any time
- Restriction on choice of housemate if sharing living unit and/or roommate if sharing bedroom in residential setting
- Restriction on choice to share bedroom (and with whom) in residential setting
- Restriction on freedom to furnish and decorate living unit and bedroom in residential setting

Process Step #1

Confirm the ID Waiver Participant is Receiving Residential Habilitation Services

What is the Specific Modification that is Needed?

Why is the Specific Modification Needed?

What Else Has Been Tried But Has Not Worked?

What is the health and/or safety reason(s) for the Modification?

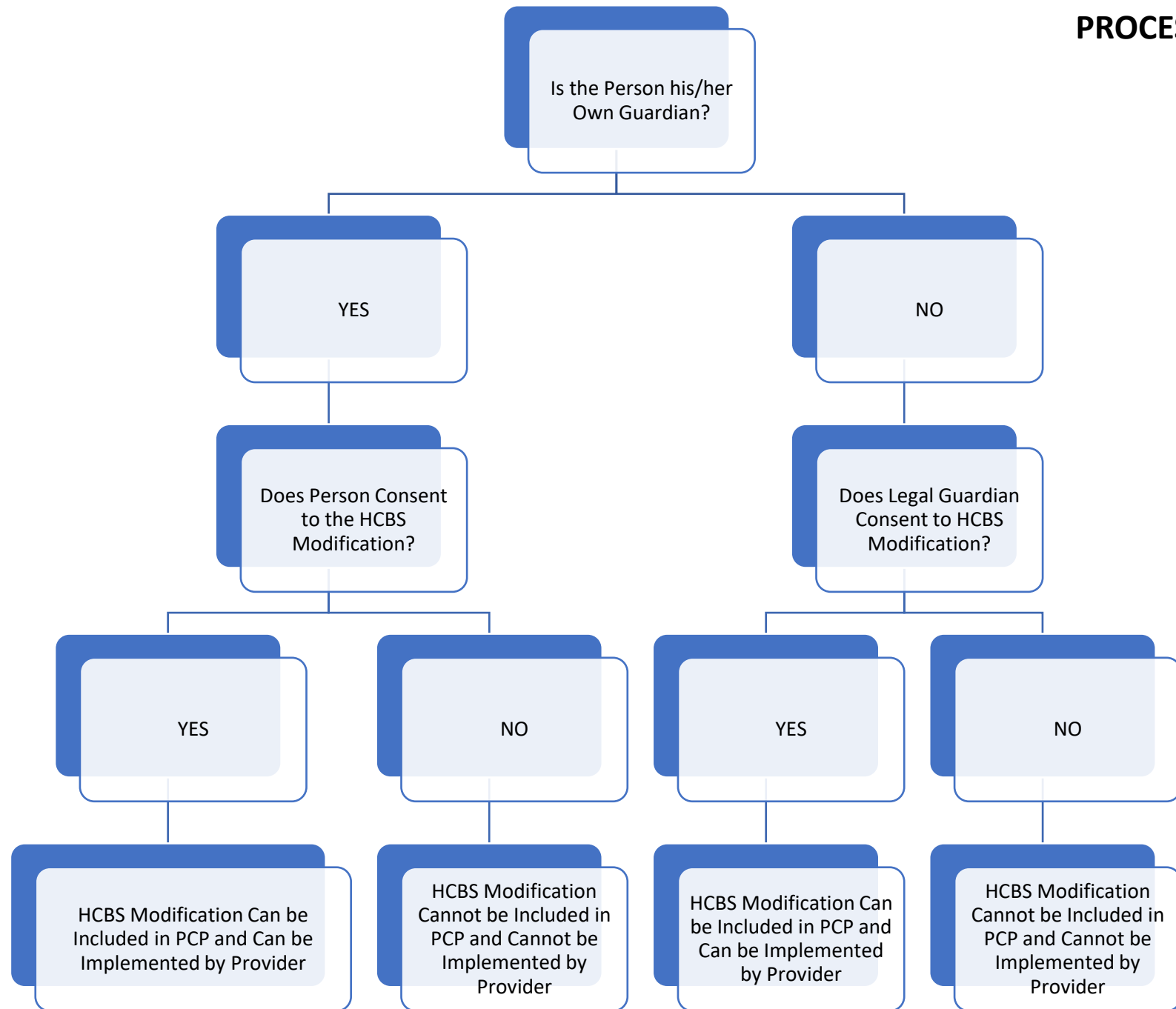
How do we know these health and/or safety needs exist for the person?

What are the positive and less restrictive interventions that have already been tried but were unsuccessful?

If none, the Modification cannot be implemented.

HCBS Modifications Include Any of the Following *in a Residential Habilitation Setting*:

- Restriction on access to food at any time
- Restriction on having visitors at any time
- Restriction on freedom to control and choose daily schedule and activities
- Restrictions on having key or other way to independently open locked doors in residential setting at any time
- Restriction on choice of housemate if sharing living unit and/or roommate if sharing bedroom in residential setting
- Restriction on choice to share bedroom (and with whom) in residential setting
- Restriction on freedom to furnish and decorate living unit and bedroom in residential setting



- HCBS Modifications Include Any of the Following *in a Residential Habilitation Setting*:**
- Restriction on access to food at any time
 - Restriction on having visitors at any time
 - Restriction on freedom to control and choose daily schedule and activities
 - Restrictions on having key or other way to independently open locked doors in residential setting at any time
 - Restriction on choice of housemate if sharing living unit and/or roommate if sharing bedroom in residential setting
 - Restriction on choice to share bedroom (and with whom) in residential setting
 - Restriction on freedom to furnish and decorate living unit and bedroom in residential setting

